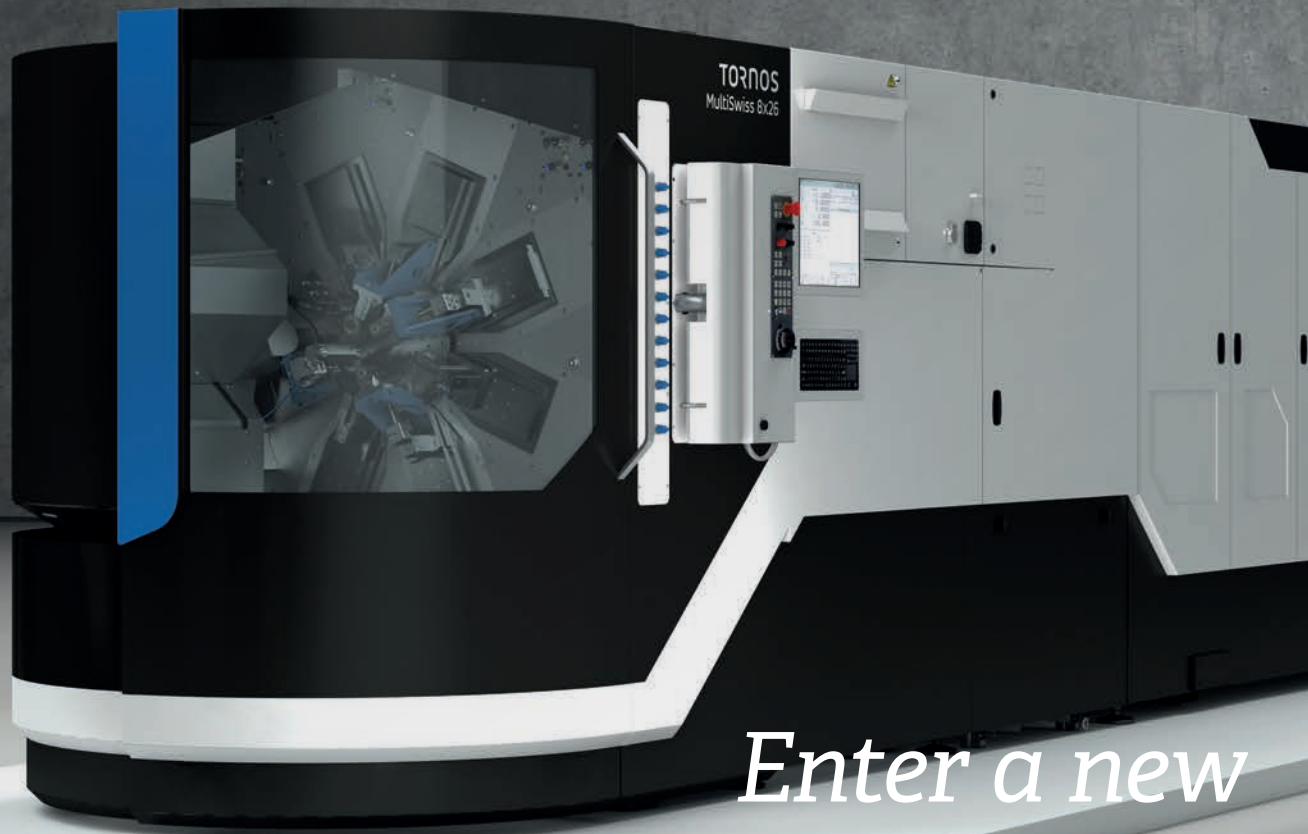


TORNOS



*Enter a new
dimension*

MultiSwiss

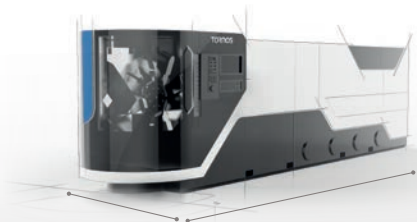


Meet the most strict requirements with the new MultiSwiss.

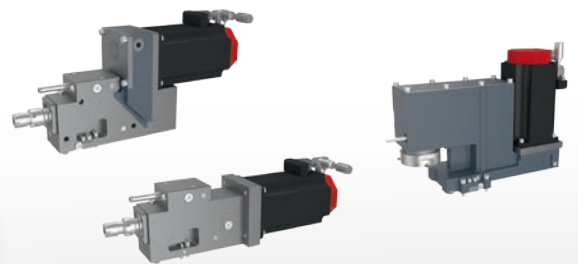
Building on the success of the MultiSwiss 6x16 machine, the new MultiSwiss takes you to new dimensions of agility, efficiency and ease of setup across a vast range of applications. With its dynamism and flexible operation, the MultiSwiss offers your operators a unique working environment.

Advantages for you

- Boost your responsiveness
- Reduce your setup time
- Ensure consistency of production
- Outstanding finish and precision
- Reduce tool wear



Compact



Wide range of devices and tool holders

Technical specifications

TECHNICAL SPECIFICATIONS		MultiSwiss 6x16	MultiSwiss 8x26	MultiSwiss 6x32
Bar passage	mm	4-16	8-26	8-32
Max. part length	mm	40	65	65
Max. remnant length	mm	70	118	120
Max. main spindle speed	rpm	8000	8000	6000
Main spindle power	kW	5.60	11.00	11.00
Main spindle torque	Nm	8	17.30	20.00
Max. counter spindle speed	rpm	8000	8000	8000
Counter spindle motor power	kW	5.00	11.00	11.00
Counter spindle motor torque	Nm	8.00	12.00	15.00
Main spindle Z stroke	mm	50	75	75
Counter spindle Z stroke	mm	150	150	150
Number of linear axes		14	18	14
Number of Y axis		1 (option)	3 / 6 (option)	3 (option)
Number of rotating axes (C Axis)		6 + 1 (option)	8 + 1	8 + 1
Number of cross slides in main operation		5 + 1 (cutting)	7 + 1 (cutting)	5 + 1 (cutting)
Max. number of tools		18	26	20
Max. number of tools for back operation		2	5	5
Max. number of rotating tools for back operation		1	2	2
Max. length	mm	5920	9000	9000
Max. width	mm	1440	2260	2260
Height	mm	2120	2160	2160
Weight	kg	7000	15,000	14,800
Installed power	kW	59	140	140
Numerical control		Fanuc	Fanuc	Fanuc
Programming system		TB-DECO ADV, integrated PC	TB-DECO ADV, integrated PC	TB-DECO ADV, integrated PC

Accelerate your productivity

A big sister to the well-received MultiSwiss 6x16, the larger machine is available in two variants:

- MultiSwiss 6x32, very capable thanks to the six spindles and up to five tools in back operation for parts up to 32 mm diameter and a length of 65 mm.
- MultiSwiss 8x26, same capability in back operation but the machine is equipped with eight spindles and can work on parts up to 26 mm diameter with a maximum length of 65 mm.

The MultiSwiss is easy to set up and delivers exceptional operating economy. Its motorized barrel and independent spindles with asynchronous motors enable production rates never before achieved

with a CNC machine, with the quietest operation yet. Each spindle has its own Z axis, guided by hydrostatic bearings to extend the lifespan of your tools by 30% to 40% and ensure flawless finishes.

Its simple programming and ergonomic machining area guarantee perfect accessibility for single-spindle operators. The complete integration of peripherals at the rear of the machine makes it even easier to use.

With a vast range of compatible tool holders, the MultiSwiss is available in several configurations without Y axis, enabling you to perform the most complex machining operations in record production times.

We keep you turning



tornos.com

TORNOS LTD

Rue Industrielle 111
CH-2740 Moutier
Phone +41 (0)32 494 44 44
Fax +41 (0)32 494 44 03
contact@tornos.com

Tornos
throughout
the world



Conforms to the European CE / CEM Safety Standards

This document is based on information available at the time of publication. While every effort has been made to be accurate, the information contained herein does not purport to cover all details or variations in hardware and software, nor to provide for every possible contingency in connection with installation, operation and maintenance. TORNOS SA assumes no obligation of notice to holders of this document with respect to changes subsequently made. TORNOS SA makes no representation or warranty, expressed, implied, or statutory with respect to, and assumes no responsibility for the accuracy, completeness, sufficiency or usefulness of the information contained herein. No warranties of merchantability nor fitness for purpose shall apply.